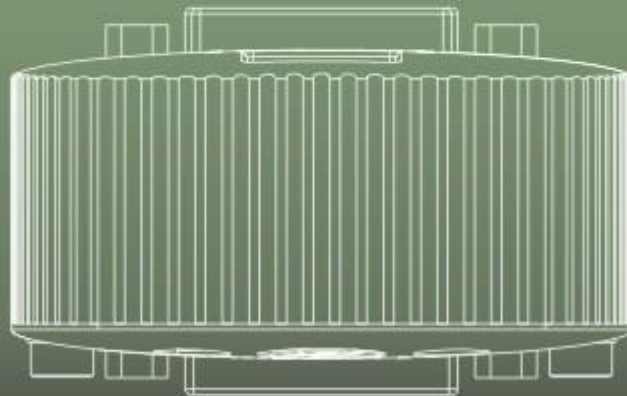


Parrot Trainer User Manual



Contents

Contents	2
Welcome	3
Introduction.....	3
Platforms.....	3
Help Help.....	3
Support.....	3
What's New	4
V1.0.....	4
Parrot Overview	5
Device Features.....	5
Ports.....	5
Spoof EDID button and LED.....	5
Pass-through mode.....	5
Spoof mode.....	5
Parrot Trainer Overview	6
Toolbar.....	6
File Operations.....	6
Parrots.....	6
Squawk!.....	6
Spoof EDID.....	6
Read Parrot.....	7
Read Monitor.....	7
Teach Parrot.....	7
EDID Summary window.....	7
Creating a New EDID	8
Learning from Monitor	10
Reading from a Parrot	12
Teaching the Parrot	13
Loading and Saving EDIDs	14
Advanced Features	15
Troubleshooting	16
It doesn't work?.....	16
Software release notes	17
Release Notes.....	17
Glossary	18

Welcome

Introduction

Welcome and thank you for using version v1.0 of the DVI Parrot Trainer EDID management software.

Platforms

DVI Parrot Trainer is designed to run on a Microsoft Windows 7, Vista or XP or Apple Macintosh OS-X (10.5.x or later - Intel only) personal computer.

Help Help

This is the PDF version of the on-line Help and it is available in various formats for printing. The on-line version, which has the advantage of being fully searchable and includes animated tutorials, can be opened from within Designer using Help > Contents on the main toolbar.

Support

As with all successful control products, support is crucial and we will do everything possible to ensure that your project is a success. Please do not hesitate to contact us with your questions, bug reports and suggestions.

Contact your local TMB office or email support@dviparrot.com

Please also visit our website to keep up to date with the latest product news and software releases: www.dviparrot.com.

What's New

V1.0

This is the initial release of Parrot Trainer.

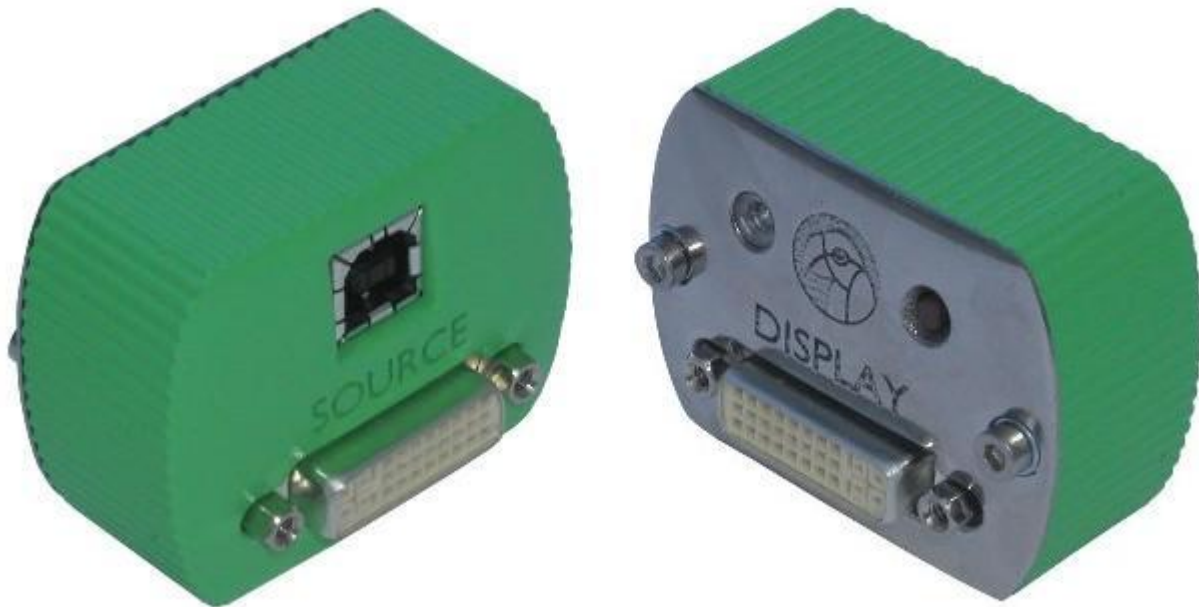
Parrot Overview

Device Features

Ports

The DVI Parrot has three ports:

- The USB connector allows the Parrot to link to the Parrot Trainer software
- The Source DVI port receives input signals
- The Display DVI port forwards chosen resolution settings to an output device



Spoof EDID button and LED

The Spoof EDID button and associated LED are located on the display side of the Parrot. The button allows the parrot to switch between two modes:

Pass-through mode

Outputs the default EDID of the input source. The LED becomes **blue** for Pass-through Mode.

Spoof mode

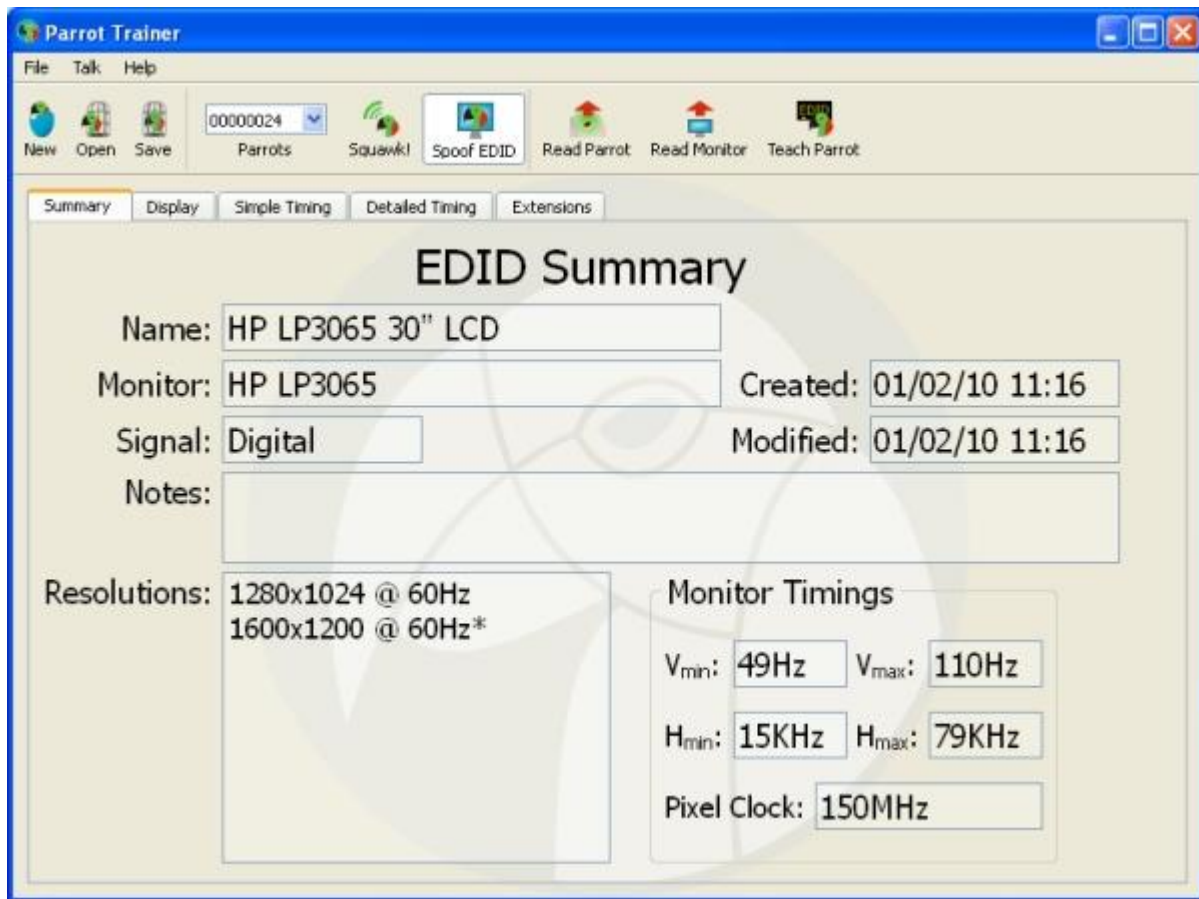
Forces the EDID to switch to a user defined resolution. The LED becomes **green** to indicate Spoof Mode

Parrot Trainer Overview

The Parrot Trainer application writes EDID settings to the Parrot and feeds back to the user from the device. The majority of users will not need more than the Summary page to prepare a Parrot for use.

Toolbar

All commands are displayed on the application toolbar:



File Operations

The New icon can be used to create new EDID settings through checking appropriate resolution presets or through defining a custom resolution. These EDIDs can then be saved and reloaded using the Open and Save buttons.

Parrots

The Parrots drop down allows a Parrot to be selected from any number of devices that appear as connected to the system over USB. Parrots are identified by their serial number.

Squawk!

Squawk! causes the LED on the Parrot to pulse blue. This acts as a test for connectivity and identification.

Spoof EDID

Spoof EDID allows toggling between the device being in [Pass Through Mode](#) and [Spoof Mode](#).

Read Parrot

Read Parrot displays the current settings on the Parrot in the EDID summary window.

Read Monitor

Read Monitor displays the monitor's supported resolutions in the EDID summary window.

Teach Parrot

Teach Parrot writes the current EDID resolutions displayed in the summary window to the Parrot.

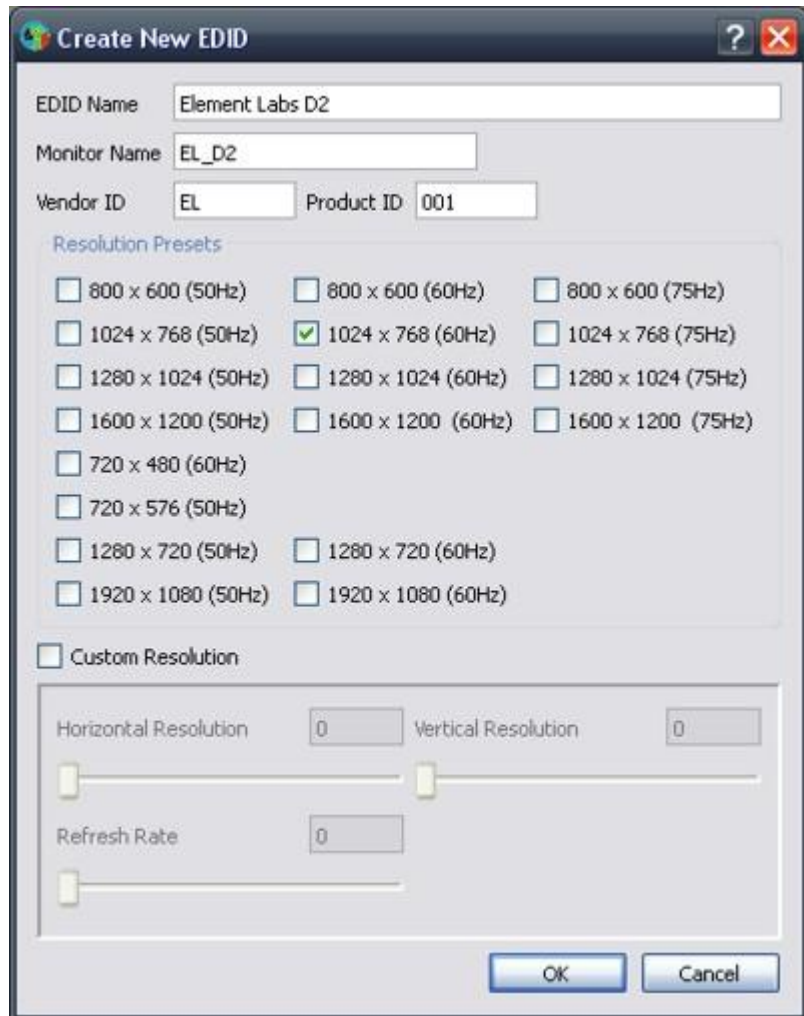
EDID Summary window

The EDID Summary displays current EDID settings. These are either:

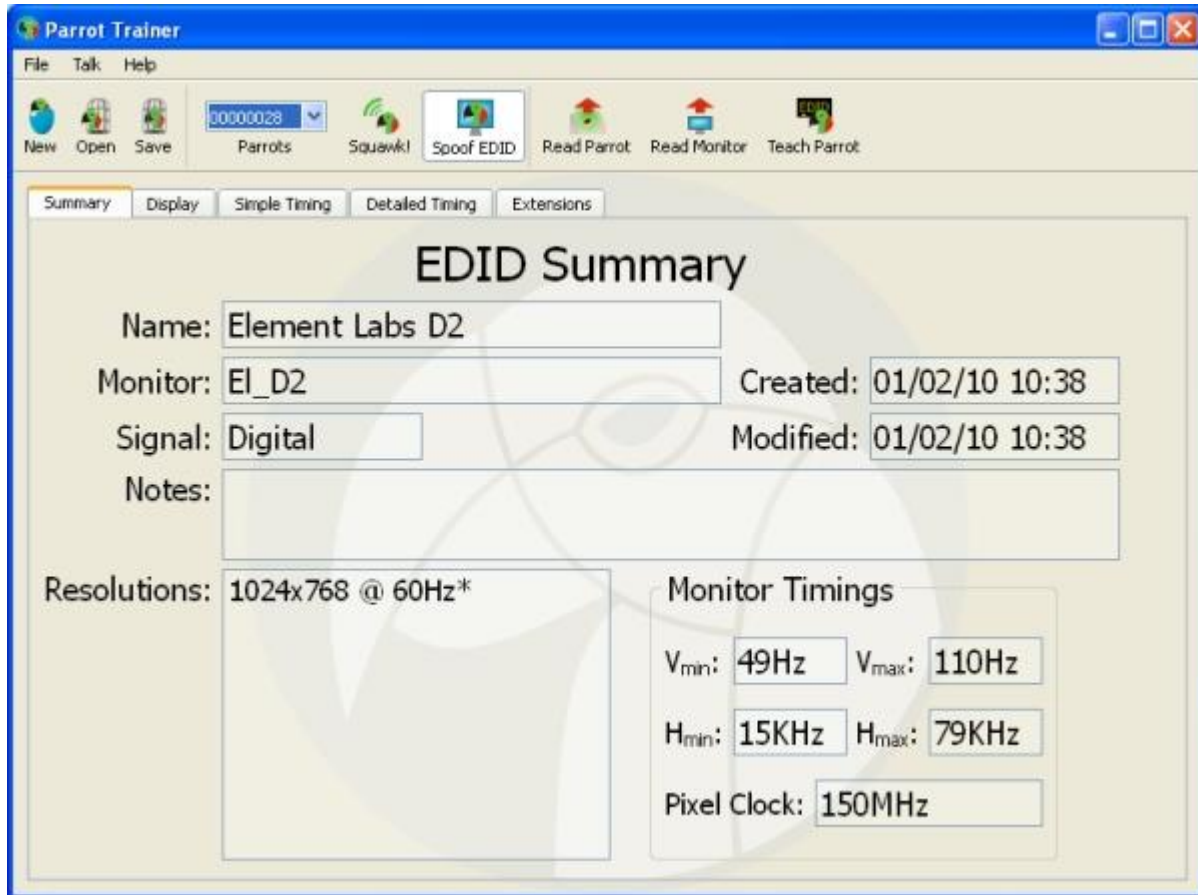
- The latest settings created from 'New'
- The last settings read from a Parrot
- The last settings read from a Monitor

Creating a New EDID

The simplest way to create EDID settings is through the 'New' icon. The Create New EDID dialogue allows Resolution Presets to be selected or Custom Resolutions to be defined.



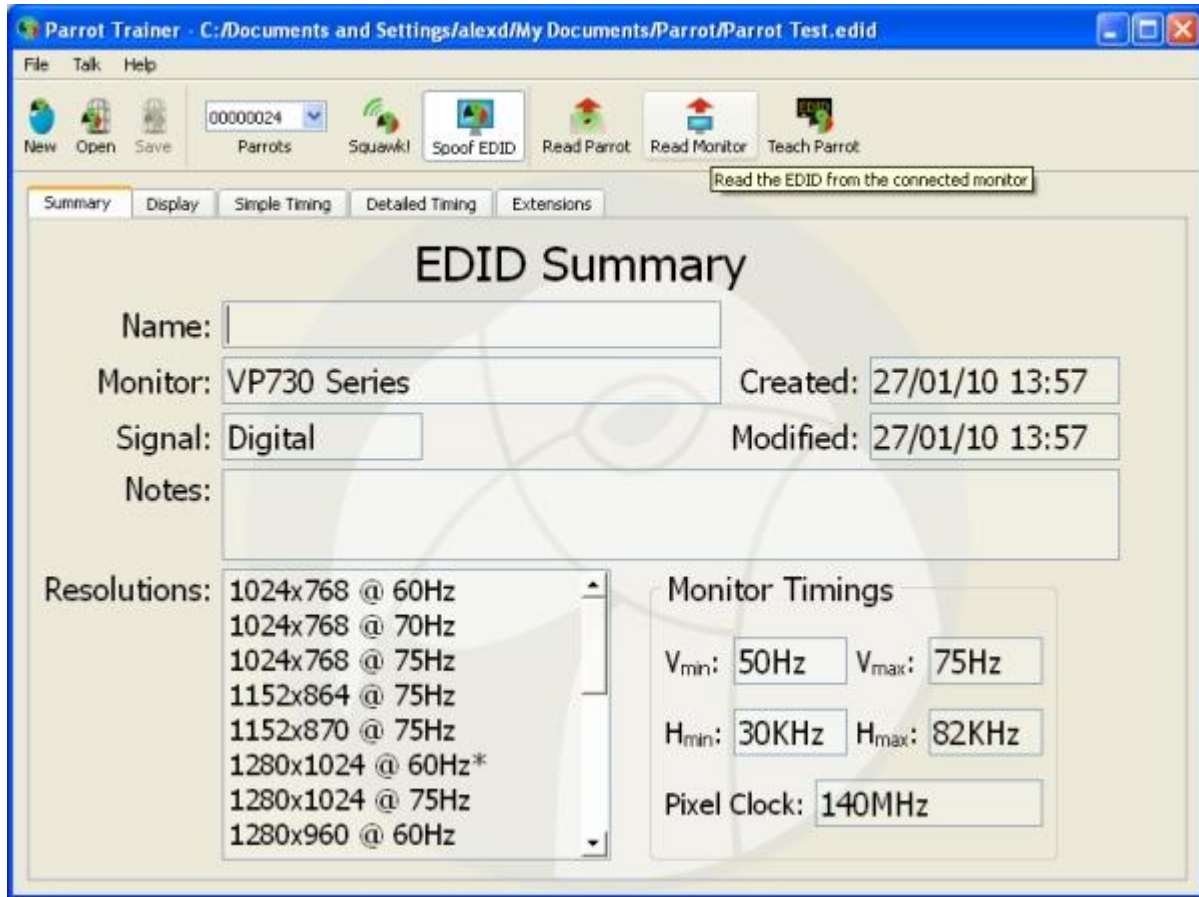
When selection is complete, clicking OK allows chosen settings to be displayed in the summary window. The settings are then ready to be [taught](#) to a Parrot.



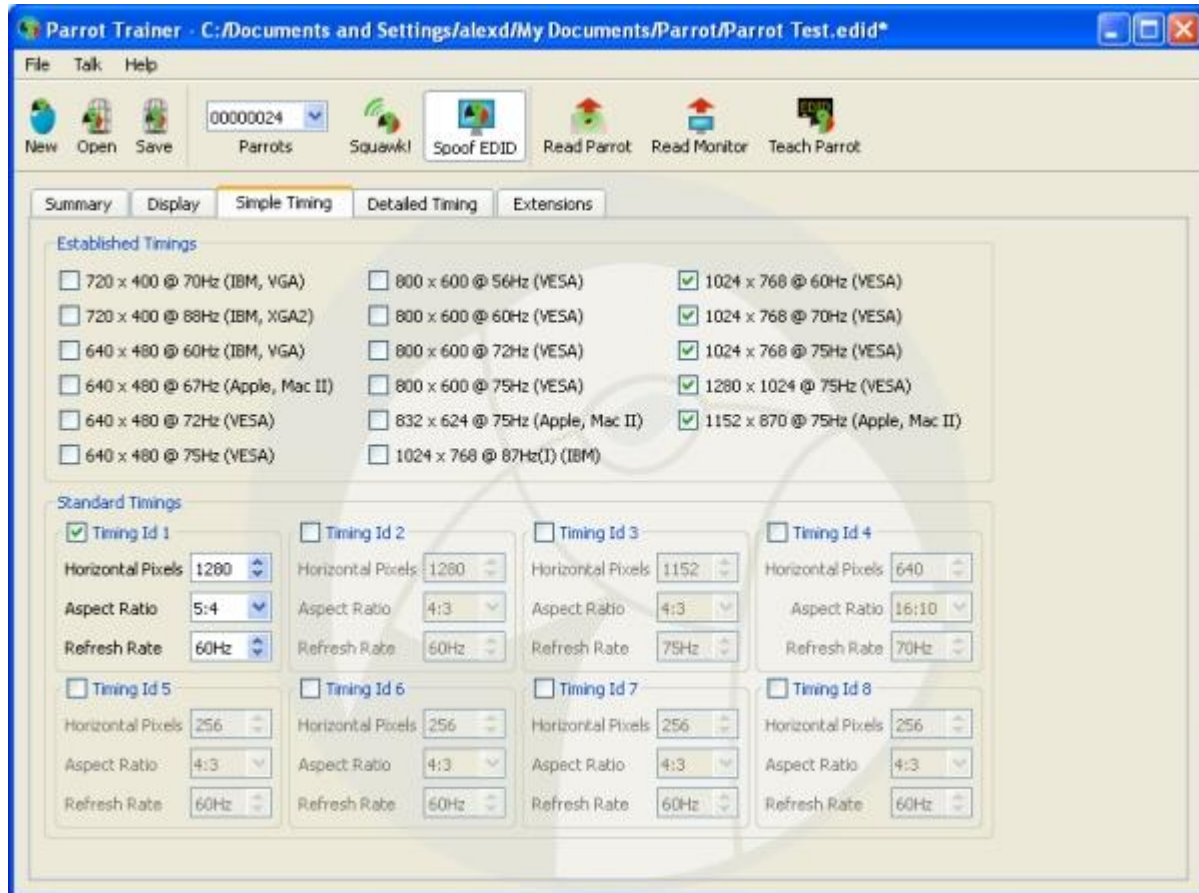
Learning from Monitor

To read EDID settings from a Monitor, attach the monitor via a DVI-D cable to the Display port of the Parrot. Ensure that the required Parrot serial number is selected and click the **Read Monitor** icon on the toolbar.

The Monitor's supported EDID settings are then displayed in the Summary window as indicated below.



These can be adjusted as required via checking or unchecking resolutions on the Simple Timing tab.

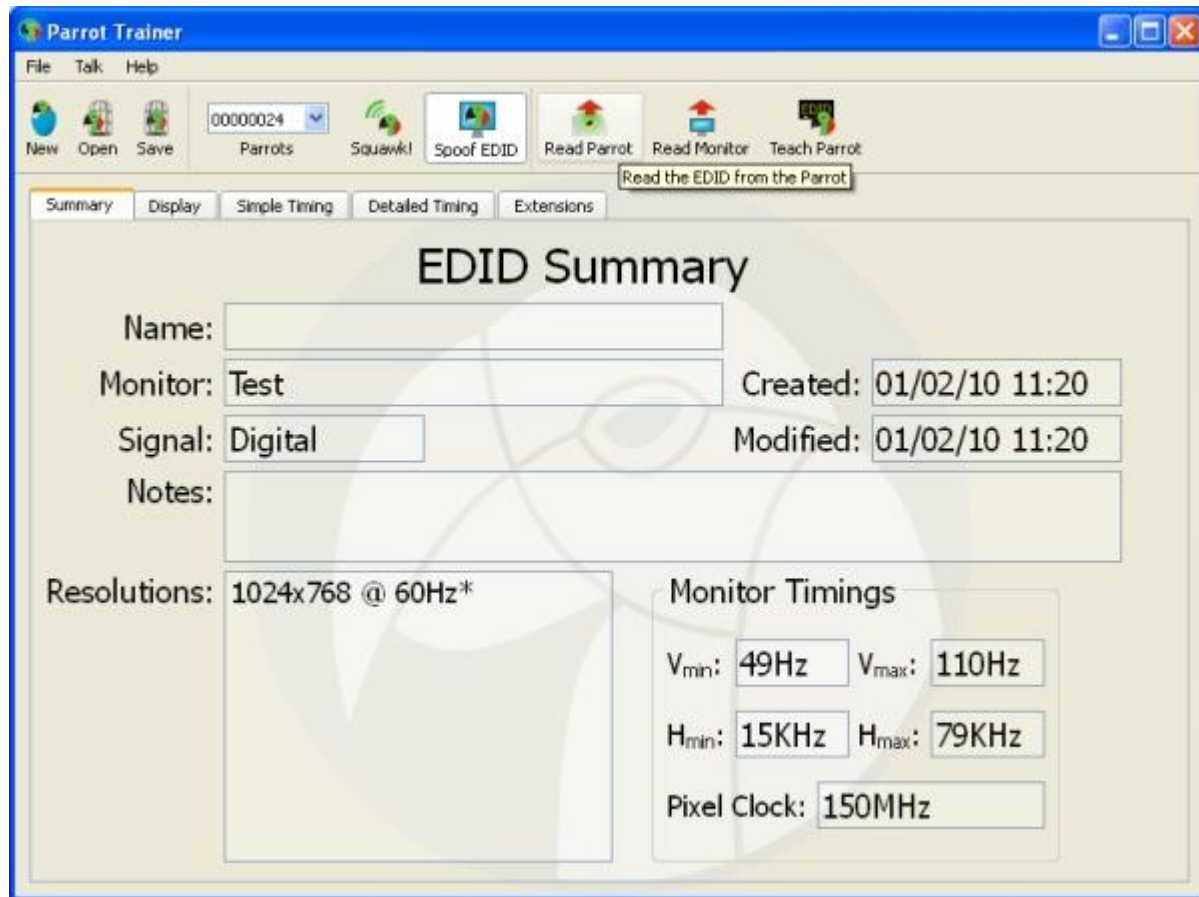


When selection is complete, the resolutions can then be [taught](#) to a Parrot.

Reading from a Parrot

To read EDID settings from a Parrot, connect the Parrot via a USB cable to the computer. Ensure that the required Parrot serial number is selected and click **Read Parrot**.

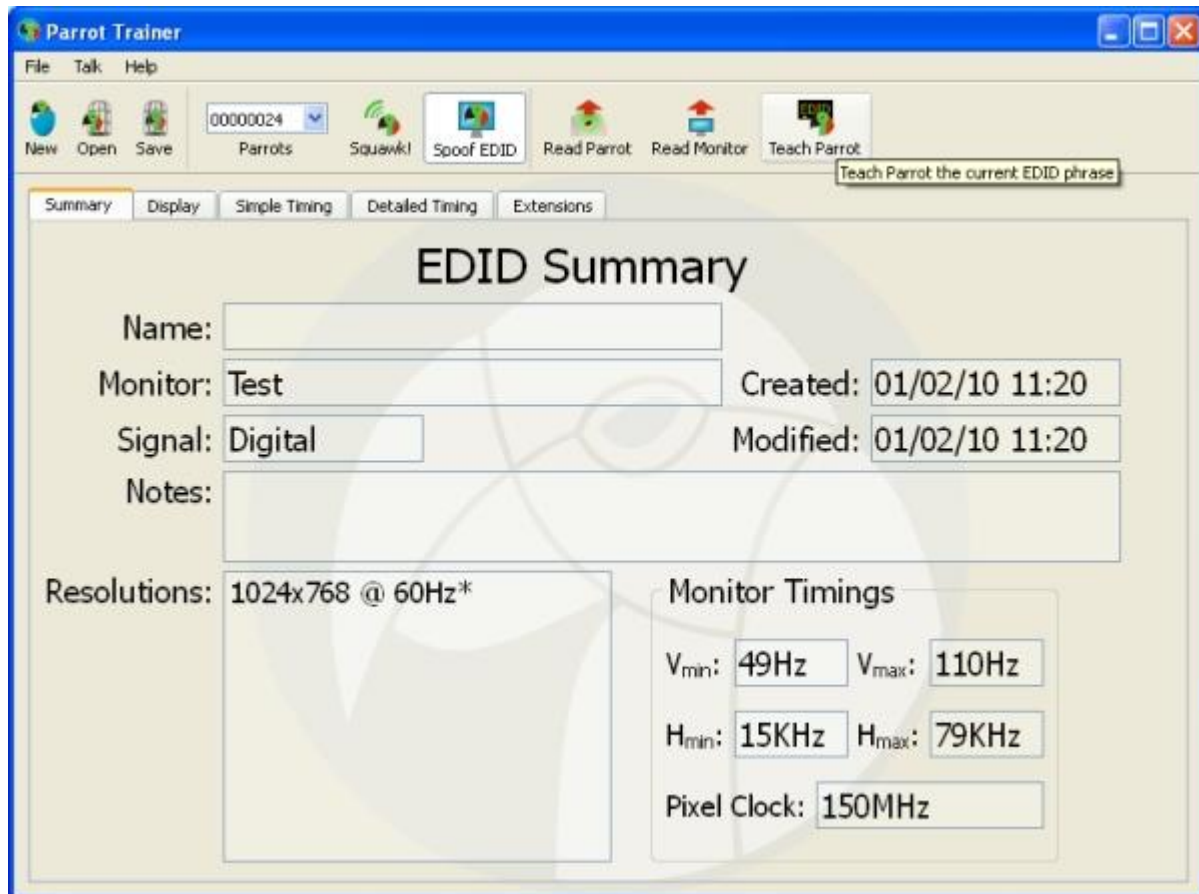
The Parrot's current EDID settings are then displayed in the Summary window as indicated below:



Teaching the Parrot

To teach EDID settings to a Parrot, connect the Parrot via a USB cable to a computer. Ensure that the resolutions listed in the EDID summary are the required resolutions. Check that the required Parrot serial number is selected and click **Teach Parrot**.

The Parrot's current EDID settings are then displayed in the Summary window below:



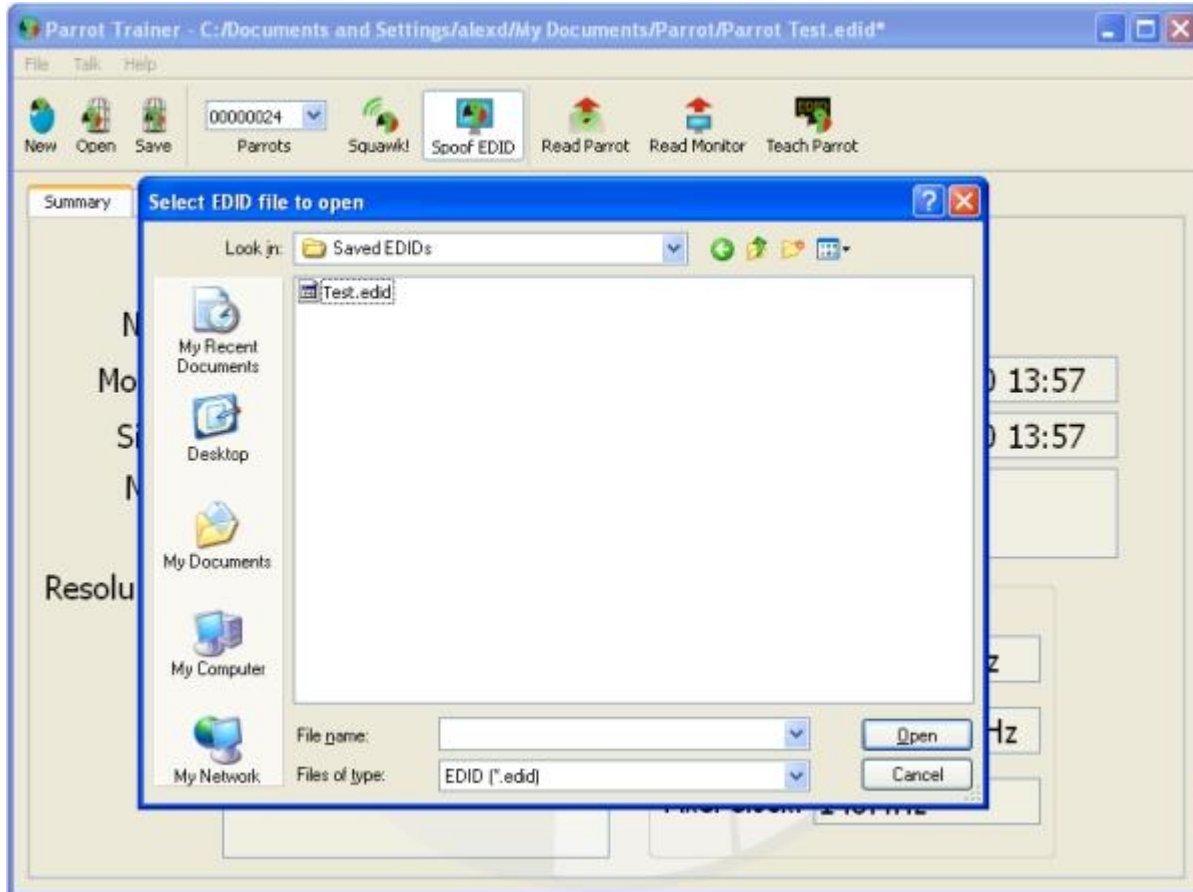
The screenshot shows the Parrot Trainer application window. The title bar reads "Parrot Trainer". The menu bar includes "File", "Talk", and "Help". The toolbar contains icons for "New", "Open", "Save", "Parrots" (with a dropdown menu showing "00000024"), "Squawk!", "Spoof EDID", "Read Parrot", "Read Monitor", and "Teach Parrot". A tooltip for "Teach Parrot" displays the text "Teach Parrot the current EDID phrase".

The main content area has tabs for "Summary", "Display", "Simple Timing", "Detailed Timing", and "Extensions". The "Summary" tab is active, showing the "EDID Summary" window. The fields are as follows:

Name:	<input type="text"/>		
Monitor:	Test	Created:	01/02/10 11:20
Signal:	Digital	Modified:	01/02/10 11:20
Notes:	<input type="text"/>		
Resolutions:	1024x768 @ 60Hz*		
Monitor Timings			
V _{min} :	49Hz	V _{max} :	110Hz
H _{min} :	15KHz	H _{max} :	79KHz
Pixel Clock:	150MHz		

Loading and Saving EDIDs

EDID settings can be saved or recalled at any time. Once the EDID settings are displayed in the Summary window as required, select Save and choose a filename:



EDID settings can be loaded by clicking the Open icon and selecting the required file.

Advanced Features

This section of the manual still under development. If you have suggestions for features needing documentation then please contact [Support](#)

Troubleshooting

The following section lists common problems and their solutions:

It doesn't work?

Contact [support](#), please be prepared to send in your EDID file.

Software release notes

Release Notes

These are provided with the installation Readme file.

Glossary

E

EDID

Extended Display Identification Data

P

Parrot

1. Any of numerous tropical and semitropical birds of the order Psittaciformes, characterized by a short hooked bill, brightly colored plumage, and, in some species, the ability to mimic human speech or other sounds. 2. One who imitates the words or actions of another, especially without understanding them. 3. EDID Spoofer